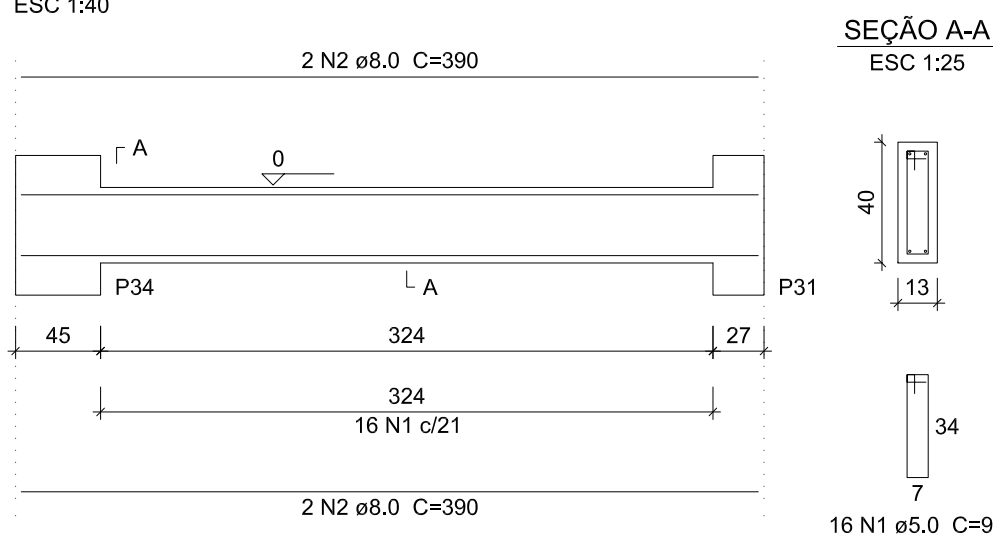
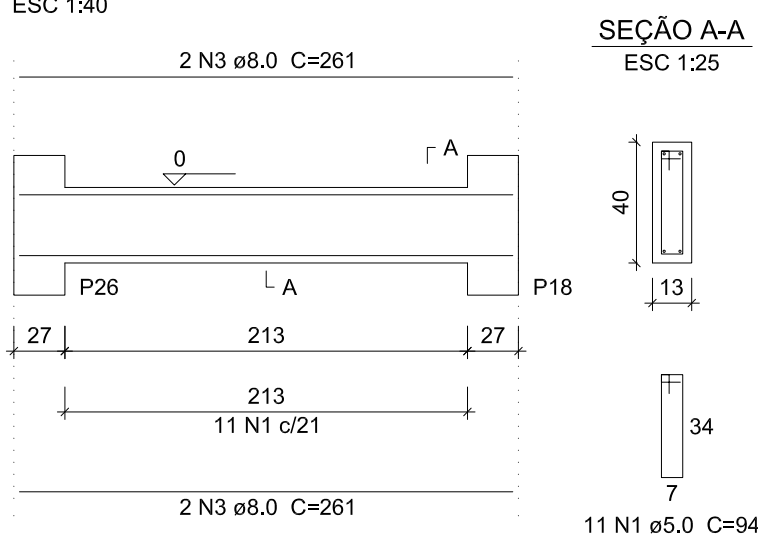


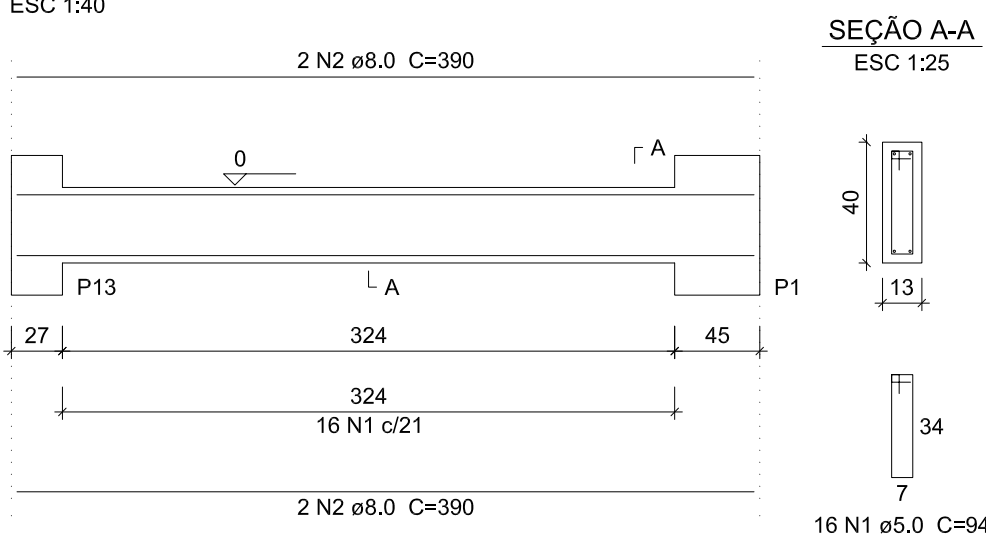
VB33



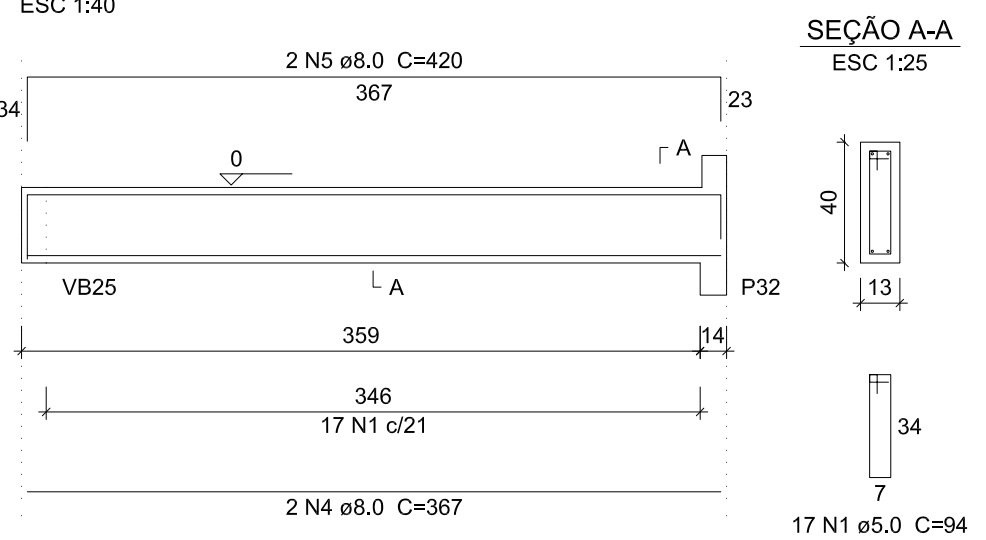
VB35



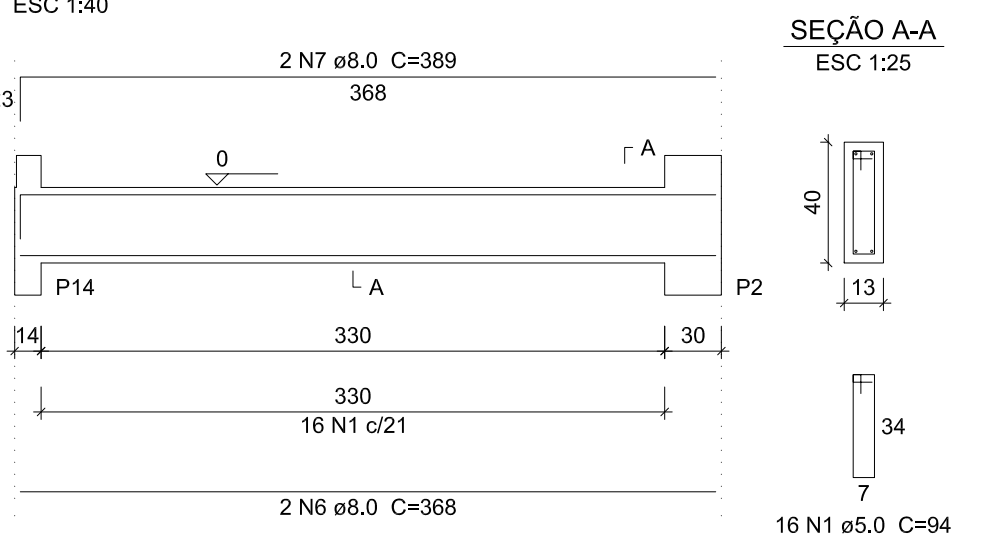
VB37



VB38



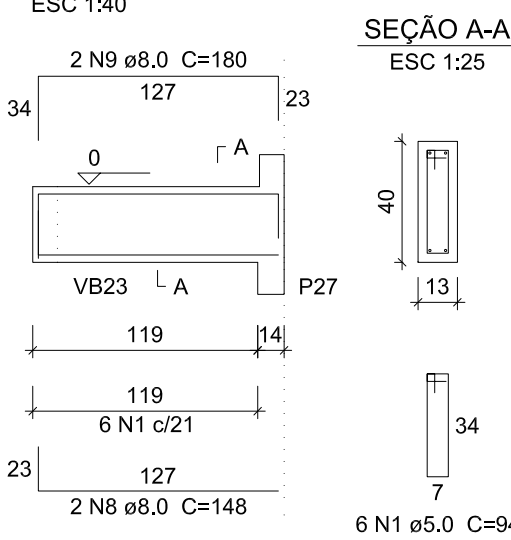
VB39



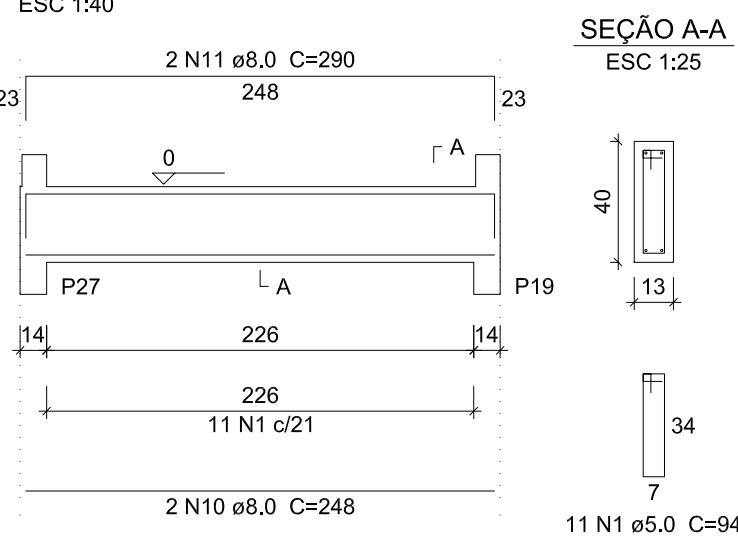
Relação do aço

VB33	VB35	VB37			
VB38	VB39	VB40			
VB41	VB42	VB43			
VB44	VB45	VB46			
VB47	VB48	VB49			
VB50	VB51	VB52			
VB53	VB54				
AÇO	N	DIAM	Q	UNIT (cm)	C.TOTAL (cm)
CA60	1	5.0	249	34	23406
CA50	2	8.0	8	390	3120
	3	8.0	4	261	1044
	4	8.0	2	367	734
	5	8.0	2	420	840
	6	8.0	2	368	736
	7	8.0	2	389	778
	8	8.0	2	148	296
	9	8.0	2	180	360
	10	8.0	4	248	992
	11	8.0	4	290	1160
	12	8.0	2	149	298
	13	8.0	2	181	362
	14	8.0	2	236	472
	15	8.0	2	268	536
	16	8.0	8	275	2200
	17	8.0	4	283	1132
	18	8.0	2	167	334
	19	8.0	2	209	418
	20	8.0	2	237	474
	21	8.0	2	258	516
	22	8.0	2	328	656
	23	8.0	2	349	698
	24	8.0	2	229	458
	25	8.0	2	250	500
	26	8.0	4	298	1192
	27	8.0	2	503	1006
	28	8.0	2	504	1008
	29	10.0	2	520	1040
	30	10.0	2	521	1042

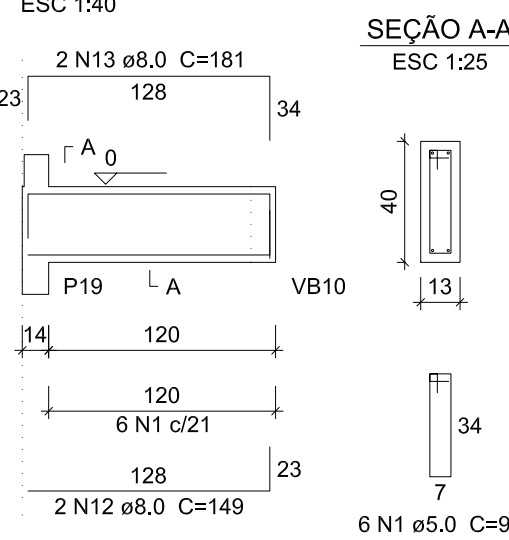
VB40



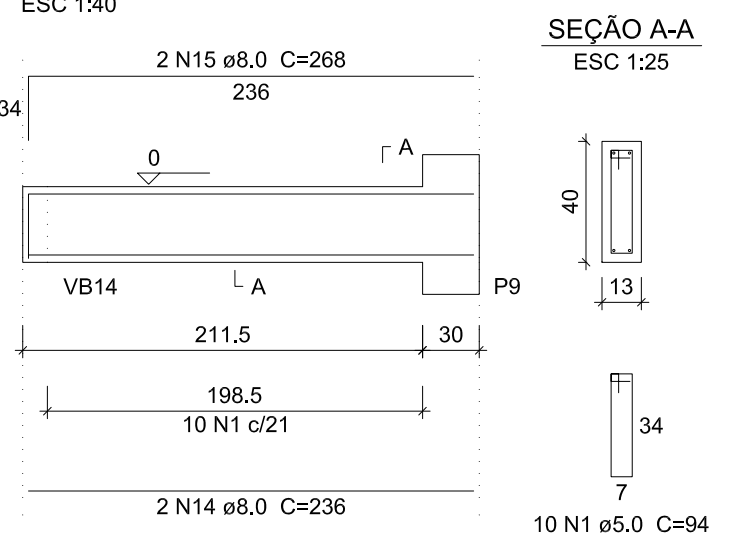
VB41



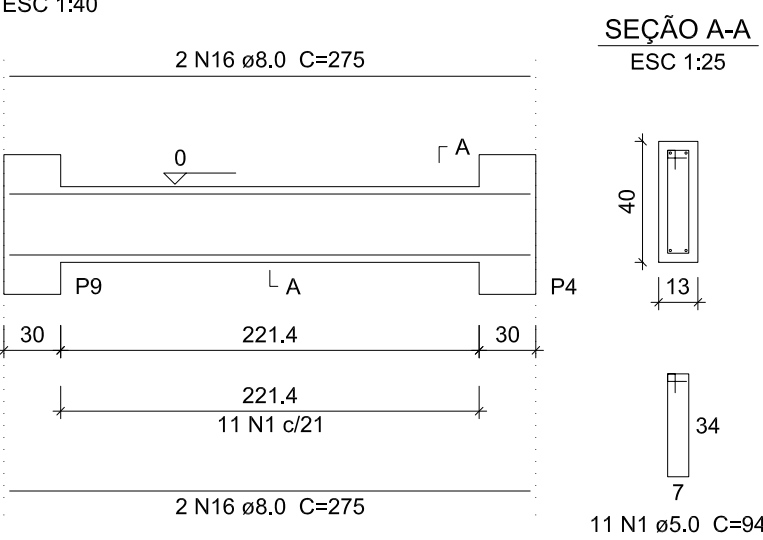
VB42



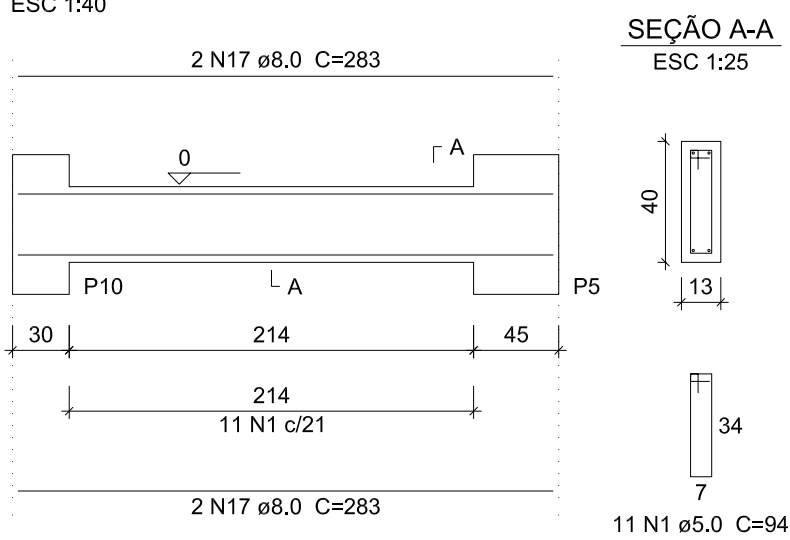
VB43



VB44



VB45

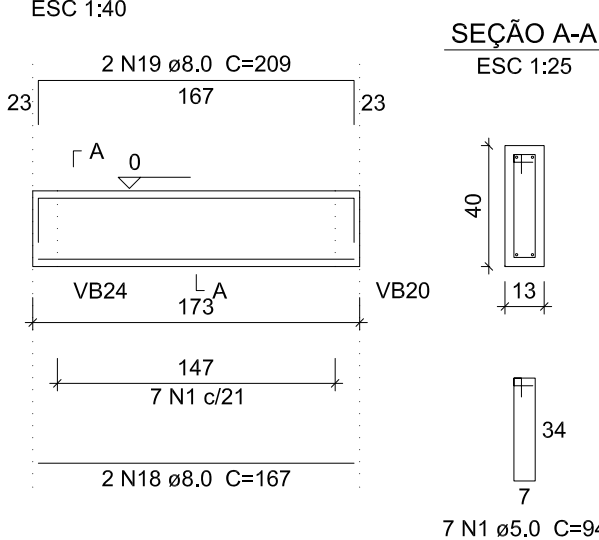


Resumo do aço

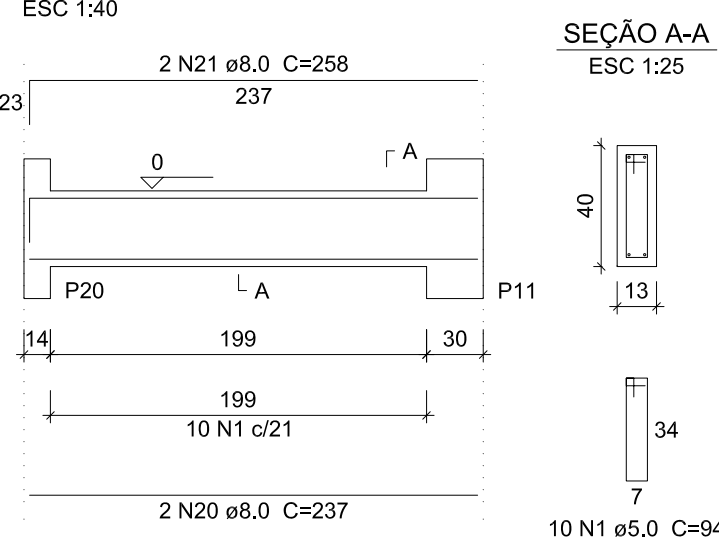
AÇO	DIAM	C.TOTAL (m)	PESO (kg)
CA50	8.0	223.2	88.1
CA60	10.0	20.9	12.8
CA60	5.0	234.1	36.1
PESO TOTAL			
CA50	100.9		
CA60	36.1		

Vol. de concreto total (C=25) = 3.11 m³
Área de forma total = 55.63 m²

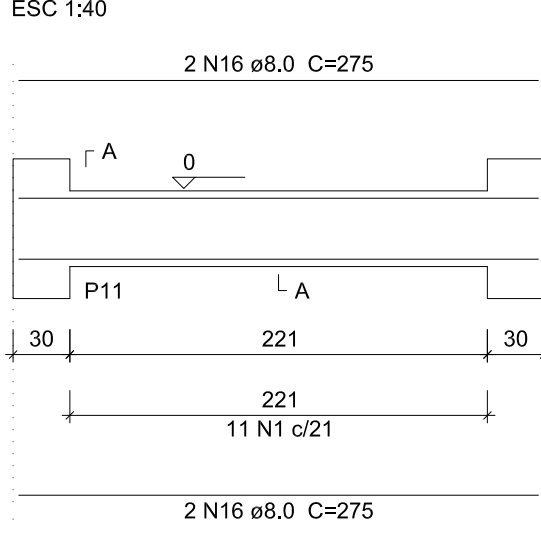
VB46



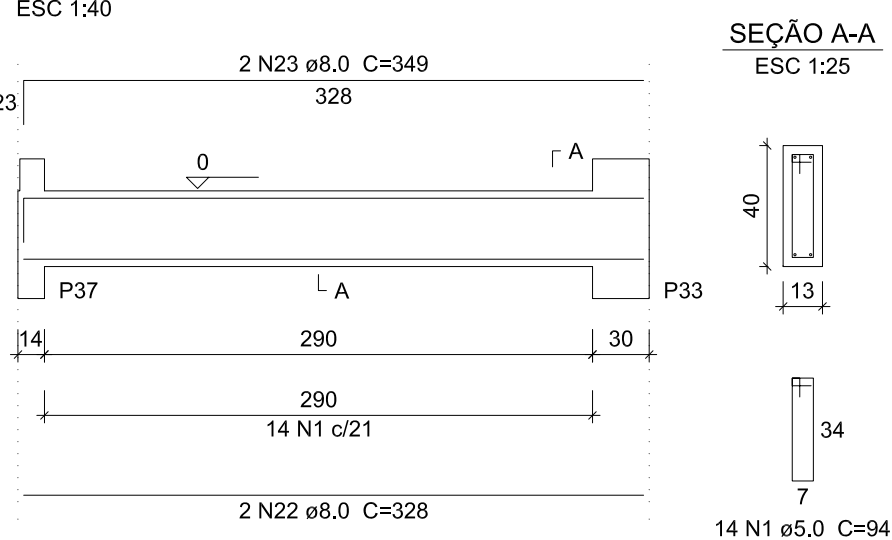
VB47



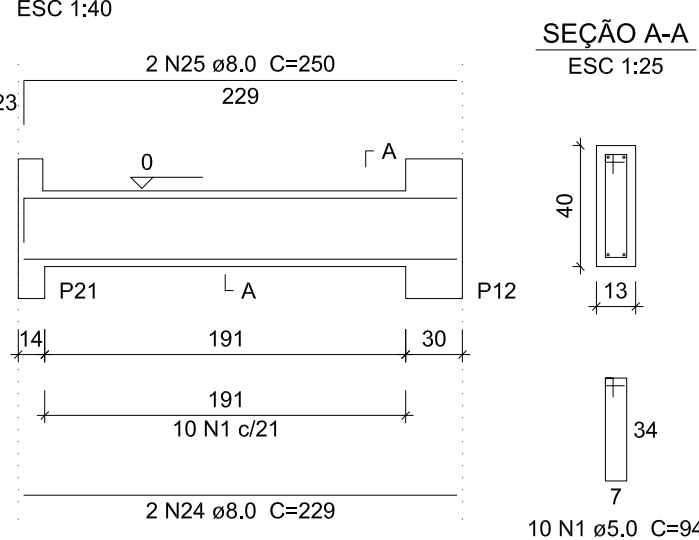
VB48



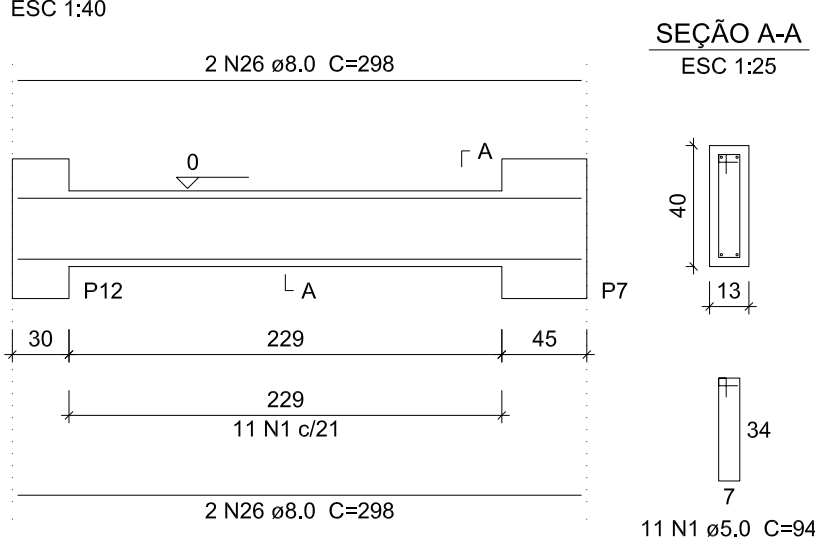
VB49



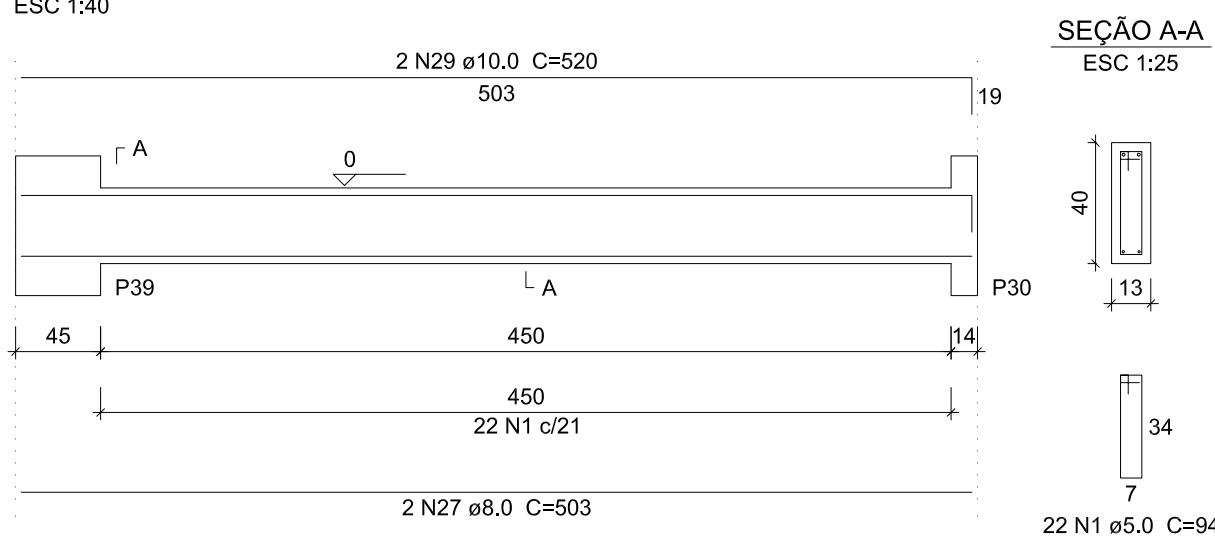
VB50



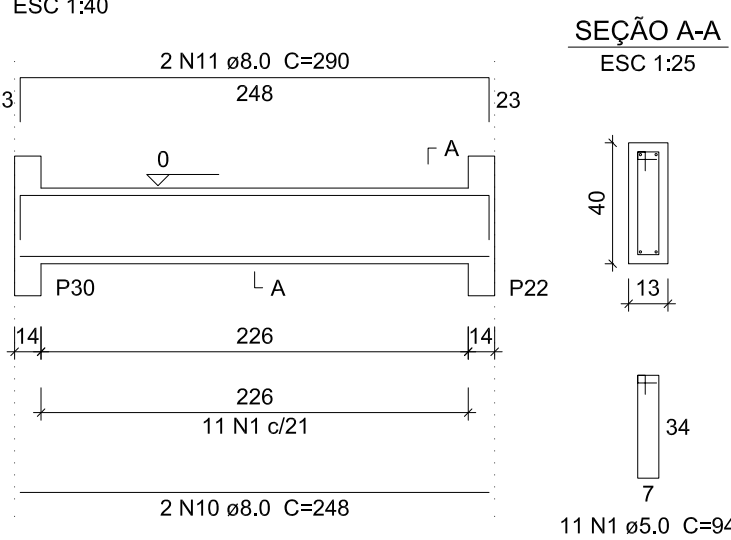
VB51



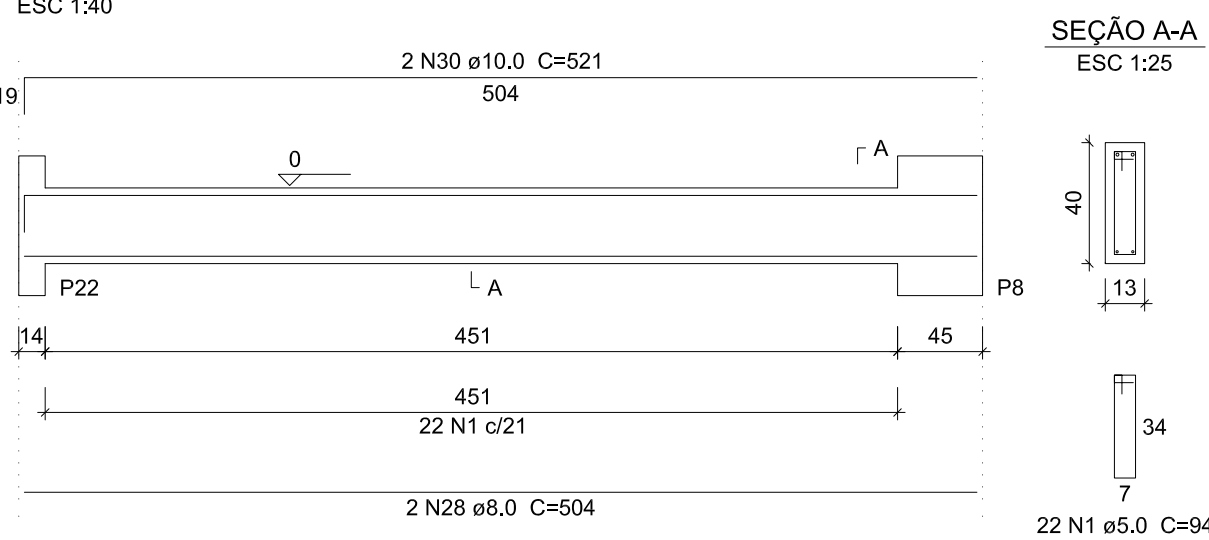
VB52



VB53



VB54



DETALHAMENTO DAS VIGAS DO PAVIMENTO BALDRAME
ESCALA: INDICADA



GERÊNCIA DE PROJETOS E INFRAESTRUTURA
APROVADO
TÉCNICO RESPONSÁVEL PELA APROVAÇÃO

C.E. PROF. JOAQUIM FRANCISCO SANTIAGO

AMPLIAÇÃO E REFORMA

ENDEREÇO
RUA XAVANTES COM AV. BERNADO SAYÃO, SETOR EVEREST,
NIQUELÂNDIA - GO

ÁREA DO TERRENO	ÁREA EXISTENTE	ÁREA DE REFORMA	ÁREA A CONSTRUIR DAS PASSARELAS	ÁREA TOTAL A CONSTRUIR	ÁREA TOTAL
9.609,99m²	-	-	488,78m²	3.591,01m²	3.591,01m²

AUTOR: FÁBIO EMMANUEL MATOS PERIOTTO | CAU: A1080090

RT DA OBRA:

PROPRIETÁRIO: SECRETARIA DE ESTADO DA EDUCAÇÃO CNPJ: 01.409.705.0001-20
PREPOSTO: JESSICA ALVES BUENO SOUSA CPF: 033.178.021-62

ESTRUTURAL BLOCO ADM

TIPO DE PROJETO

DETALHAMENTO DAS VIGAS DO PAVIMENTO BALDRAME

ASSUNTO:

DATA: JUNHO/2022 ESCALA: INDICADA REVISÃO: 000 Nº RRT/ART:

REV.	DATA	DESCRIÇÃO	VISTO

5/9

FOLHA: